

UPHOLSTERY PRODUCT INFORMATION SHEET

PAXTON & VICTORIA

INSPIRATION

The Arc-Com Design Studio looks to Victorian Era England for inspiration for its two new high-performance, polyester velvets—Patterns **Victoria & Paxton**.

Paxton's linear geometry finds its inspiration in the architectural design of London's Crystal Palace. The Crystal Palace was a cast iron and plate glass structure originally built to house the Great Exhibition of 1851. More than 14,000 exhibitors from around the world gathered in its 990,000 square foot exhibition space to display examples of technology developed in the Industrial Revolution. Designed by Joseph Paxton, the Great exhibition building was three times the size of St. Paul's Cathedral. The framework of **Paxton** is reminiscent of the complex façade of this structure.

The architectural style of the Crystal palace was Victorian, and The Great Exhibition was opened by Queen Victoria herself on May 1, 1851. Queen Victoria was married wearing lace, influencing the wedding dress style for decades.

Victoria's modernized decorative design styling is reminiscent of the ornately patterned lace that was popular during her reign. **Victoria** speaks to an emerging design trend, being dubbed the "Grandmillennial Style". Grandmillennial Style combines modern design with pieces you might expect to see in your grandmother's home. This trend is all about younger generations who love design and décor that we might culturally view as "antiquated" or "outdated". People often return to traditional styles to soothe the uncertainty of the world. Grandmillennial Style is also appealing because it's affordable and eco-friendly in practice. The style hinges on antiques, which can be more affordable than buying brand new furniture.

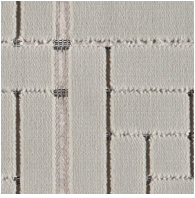
PAXTON COLOR STORY



VICTORIA COLOR STORY



PAXTON



Repeat: H: 7" x V: 7 1/2"
Weight: 25.23 oz.
Content: 100% Polyester
Finish/Backing: Stain Resistant Finish
AC#: 63990 - 64004
Skus: 15
US\$: 100 yds+: \$43.85
1 - 100 yds: \$47.95

VICTORIA



Repeat: H: 7" x V: 8"
Weight: 25.23 oz.
Content: 100% Polyester
Finish/Backing: Stain Resistant Finish
AC#: 63970 - 63982
Skus: 13
US\$: 100 yds+: \$43.85
1 - 100 yds: \$47.95

Due to the varying pile height and the inherent nature of velvets, slight shading will occur with the directional movement of the pile. This is to be expected and can be minimized by moving the pile in the opposite direction. Fabric is directional and must be applied consistently.

ENVIRONMENT

-
- Flame Retardant Free
 - Antimicrobial Free | Antibacterial Free
 - Non-PFOA, Non-PFOS Stain Resistant Finish

TESTING

This fabric has passed:

Flammability: California Bulletin #117-13; UFAC: Class 1/NFPA 260 ; ASTM E-84 (unadhered)
Abrasion: 150,000 double rubs (Wyzenbeek Method)
Lightfastness: 40 hours

CLEANING CODE: S

OPTIONS

Custom color minimum

100 yds. - Piece Dye

COUNTRY OF ORIGIN:

Turkey